

### 60mm Square (2.361 in.sq)

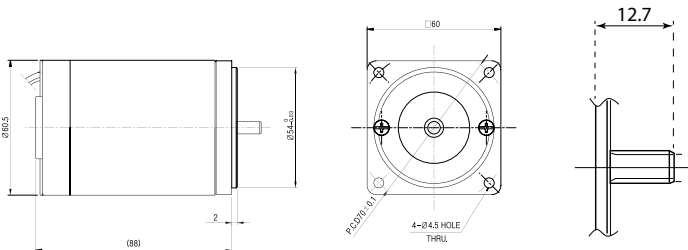
- Permanent Magnet DC Motors are the best solution to motion control and power transmission applications where compact size, wide operating speed range, ability to adapt to arrange of power.
- Their ability to produce high torque at low speed make them suitable substitutes for gearmotors in many application.
- Compare to the same size AC motor, it is easy to control the speeds and changes the rotation direction with high efficiency.



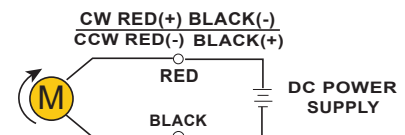
### Specifications

MODEL		K6DG15N1
Voltage		12 VDC
No Load	Speed	3250 (r/min)
	Current	0.6 A
Rated Load	Output	15 W
	Speed	3000 (r/min)
	Torque	0.49 (kgf-cm)
	Current	1.7 A
Stall	Torque	3.7 (kgf-cm)
	Current(A)	13.5 A

### Dimensions



### Connection Diagram



The direction of motor rotation is as viewed from the front shaft end of the motor  
Matching Gear Ratio 1:3 to 1:250 & Decimal Gear available.

### Application



Industrial Machinery



Medical Equipment



Textile Machinery



ATM's



Electronic Machinery



Automatic Doors



Conveyor Belts



Agricultural Machinery

### Performance Curve

