

### 80mm Square (3.15 in.sq)

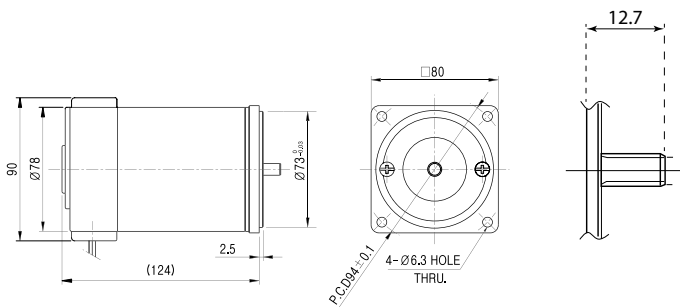
- Permanent Magnet DC Motors are the best solution to motion control and power transmission applications where compact size, wide operating speed range, ability to adapt to arrange of power.
- Their ability to produce high torque at low speed make them suitable substitutes for gearmotors in many application.
- Compare to the same size AC motor, it is easy to control the speeds and changes the rotation direction with high efficiency.



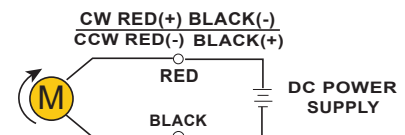
### Specifications

MODEL		K8DG25N1
Voltage		12 VDC
No Load	Speed	3300 (r/min)
	Current	1.8 A
Rated Load	Output	25 W
	Speed	3100 (r/min)
	Torque	0.811 (kgf-cm)
	Current	3.3 A
Stall	Torque	15.5 (kgf-cm)
	Current(A)	48 A

### Dimensions



### Connection Diagram



The direction of motor rotation is as viewed from the front shaft end of the motor. Matching Gear Ratio 1:3 to 1:250 & Decimal Gear available.

### Application



### Performance Curve

